



WELCOME!

SEATTLE IS A DYNAMIC
CITY, AND WE ARE HAPPY
TO PROVIDE YOU A GUIDE
TO MAKE THE MOST OF
YOUR FIRST TIME IN OUR
BEAUTIFUL CITY. READ ON
FOR INFORMATION ON:

Know Before You Go
How To Get Around
Space Needle
Pike Place Market
Seattle From The Sea
Seattle's Waterfront
Pioneer Square

seattle...
oasis
VACATION RENTALS

KNOW BEFORE YOU GO

Seattle is a compact and immensely walkable city. Bring comfortable shoes!

The culinary scene is varied. Most people think seafood, and that's fine, but with its location on the Pacific Rim, use this opportunity to sample flavors not common in other parts of the country. Thai, Vietnamese, Korean and Japanese cuisines are common and wonderful!

It does rain here. However, it's rarely all day and almost never hard enough to actually affect most plans. Many people find layers the most comfortable way to deal with our changing weather conditions.

It doesn't rain ALL the time. Summers, after about July 5th, are usually warm and mostly dry.

Starbucks is on every corner. Don't get sucked in. You can have Starbucks at home. Seattle is a coffee-crazed city and there are numerous small shops and roasters that will give you a memorable cup of coffee, so explore. Moore Coffee, Cherry Street, and Elm Coffee Roasters are all centrally located and wonderful, and just a small sample of the excellent coffee this town has to offer.

Insider's Tip: Many of the activities listed here are covered under Seattle's CityPass program. Save money and time by purchasing in advance!

HOW TO GET AROUND

Seattle is super easy to navigate, and for ease and to save money, we don't recommend a rental car for our downtown, belltown, and capitol hill homes. Most sights are within walking distance for these locations, and the light rail from the airport is both convenient and inexpensive. Check out our video guide for riding Seattle's light rail before you arrive.

In addition, parking is notoriously expensive in downtown, so even though we don't charge for parking, you will pay through the nose if trying to park elsewhere, such as at the Market or Seattle Center.

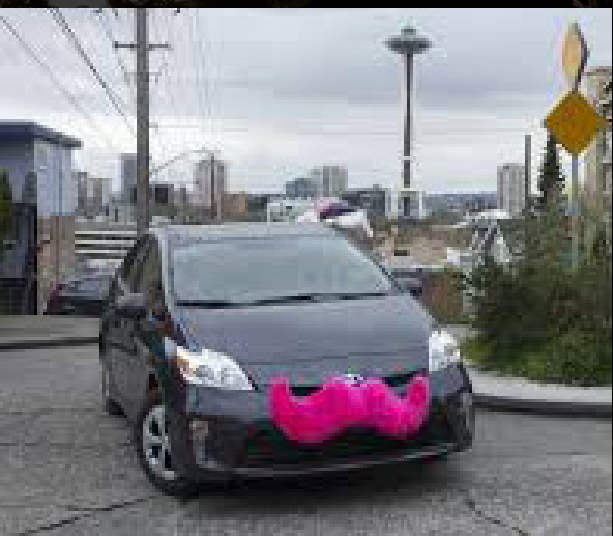
Seattle has ride shares, and we recommend Lyft. First time users can use the code SEATTLEOASIS for a discount on their first ride. Taxis also circle downtown Seattle and hot spots such as ballgames, concerts and events, so hailing a cab is an option.

Insiders Tip: Bring a hooded jacket. Downtown can be breezy - making umbrellas less than ideal. We do get regular rain, but it shouldn't impede your adventures here!

The bus system here is nationally recognized. Second and Third Avenues are the main bus thoroughfares, with buses heading south (stadiums, Museum of Flight, for example) on Second Avenue, and buses heading north (Woodland Park Zoo, Green Lake) on Third. The Light Rail Station, on Third and Pine, can provide quick access to Capitol Hill and the University of Washington campus.

Seattle is also a bike share town. Lime Bike, Spin, and Ofo are the companies currently doing business. This is a cheap and quick way to navigate from one hot spot to another! Bikes can be found on most street corners.

Insiders Tip: If you bikeshare, the length of Second Avenue has a protected bike lane, separate from car travel.



SPACE NEEDLE & SEATTLE CENTER

The Space Needle Is Seattle's Most Recognizable Landmark. Built For The 1962 World's Fair, it has undergone a \$100 million dollar renovation, and the new viewing platform is AMAZING! A question we always get is if the ticket is worth it, and the answer is a resounding yes!

Insider's Tip: A ticket to the Space Needle is actually good for two trips up in the same day. Return in the evening to see the lights of the city spread out at your feet!

The Space Needle is located on the [Seattle Center Campus](#), which is home to [MoPOP](#), [Garden and Glass](#), the [Amory](#), [Pacific Science Center](#), the [Children's Museum](#), the International Fountain and much more.



To organize your trip, and use your time wisely, plan visits to these attractions in the same day. An example would be lunch at the Amory and a trip up the Needle and spend the afternoon at Garden and Glass. Another fun day would be spending the morning exploring the Science Center and lunch at the MoPOP with the afternoon to check out the exhibits.

A large, illuminated neon sign for 'PUBLIC MARKET' is mounted on a building facade at night. To the right of the sign is a large, round clock face with white hands and numbers. Below the main sign, another neon sign reads 'FARMERS MARKET'. The background shows the building's architecture and some street-level details.

PUBLIC
MARKET

PIKE PLACE MARKET

The Pike Place Market is the “soul of Seattle” and is the oldest continuously operating farmers market in the country.

Insider’s Tip: Go hungry! There is so much good food; from empanadas to mini donuts to Chinese street food and more. Nibble as you walk, and buy for later. You won’t regret it! The great thing about Pike Place Market is that you can see it in an hour or a day. If you are tight on time, start at Pike Place Fish Market, where you’ve seen them throw the fish on TV. This is right below the main neon sign for the Market at First and Pike, so make this a photo op. Wander north through the Main Arcade, to

take in the veggie stalls, the flower vendors and the local arts and crafts artisans.

Hopefully, you can budget more than an hour though, because besides being the most popular tourist spot in Seattle, it is also the best “hidden” treasure. The Market is spread over four levels as well as the Sanitary Market, Post Alley, Hillclimb and the new Market Front. There are over 500 shops, eateries, craftspeople, buskers, and vendors at the Market.

For a walking tour of the market check out this [helpful guide](#).

SEATTLE BY THE SEA



One of the quintessential visions of our area is the green and white ferries criss-crossing the Puget Sound. Seattle is a gorgeous city, and its best face is from the water. Visit the Seattle Ferry Terminal [website](#) for the schedule.

Insider's Tip: The upper deck of a ferry boat is the perfect photo op. The entire Seattle skyline will be spread out before you.

A trip to [Bainbridge Island](#) makes a perfect ferry ride from Seattle. It is about 35 minutes across, so one of the shorter of the two main routes out of the Seattle ferry dock. Bainbridge has a cute little town, Winslow, which is walking distance from the dock. Spend the afternoon checking out the local museums, shops, and restaurants.



If you are looking for something a little more like a traditional tour, check out Argosy at Pier 55 (part of the CityPass program). Choose from a Harbor Cruise, Tillicum Island Experience or the Locks and Lake tour.



For a super quick water experience, check out the [West Seattle water taxi](#) at the south end of Pier 52 (the same dock as the Washington State Ferry terminal). A ten-minute ride across Elliott Bay will get you to Alki Beach and West Seattle.

SEATTLE'S WATERFRONT

The Waterfront is another location where you can tailor your day to how much time you have available.



Starting at the south end of the main waterfront district, check out Ye Olde Curiosity Shop. Founded in 1899, kids will love this oddball of a store, with the usual touristy swag, with the added curiosities such as mummies, a two-headed calf, and more.

Insider's Tip: The waterfront is full of fish and chip shops. For a unique experience, hit a local fave at Ivar's and share your french fries with the seagulls.

Pier 57 is home of the [Seattle Great Wheel](#), the ferris wheel that dominates the Seattle waterfront. It is one of the popular places in the city to pop the question. The Wheel has great views of Elliott Bay from any level, and the enclosed cars make this a comfortable ride any time of year.

Pier 59 is the [Seattle Aquarium](#), a world-renowned marine science facility. The harbor seals are a favorite exhibit, but there is plenty to do here - from the touch tank to the marine dome.

Continuing north, you will pass the cruise ship terminal, [Anthony's Pier 66](#), the [Victoria Clipper](#) and finish at the [Olympic Sculpture Park](#). This nine-acre area is fun to explore and includes the only nature shoreline in downtown Seattle. Tours are available and there are often music events in the summer.





PIONEER SQUARE

Pioneer Square is Seattle's oldest neighborhood. It's an area that is reinventing itself, with trendy bars, fantastic food, and charming buildings.

Great eats abound in this district. Check out Salumi, a small shop opposite King Street Station, on 2nd, with excellent cured meats. London Plane is one of the most highly acclaimed restaurants in the city. 13 Coins is a Seattle institution, and one of the few places open 24 hours. Nirmal's is the best place in the city for Indian cuisine.

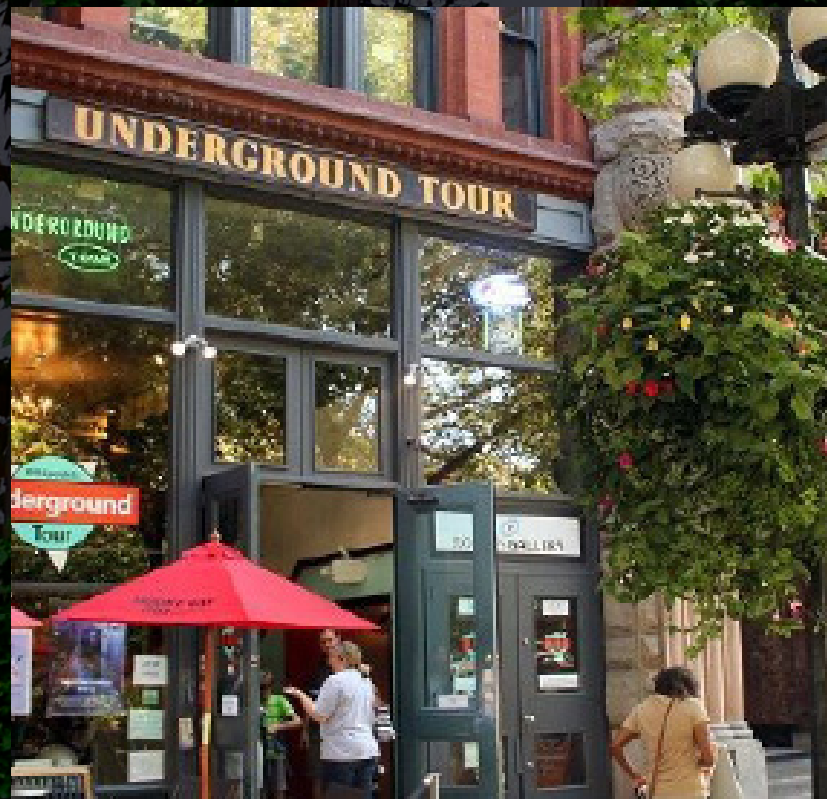
Insider's Tip: Grab a picnic or cup of coffee and enjoy Waterfall Park. This small and charming open area is a secret place that many locals don't know about.

Hanging out with kids? Klondike Gold Rush Park is an outpost of the National Park Service, and showcases Seattle's first boom economy when gold was discovered in the Yukon.

Speaking of kids, one of the best toy stores you'll find is Magic Mouse Toys. Located on the corner opposite the Pioneer Square pergola at First and Yesler, allow plenty of time for browsing!

History buffs will enjoy the Underground Tour or the Paranormal Tour. The ticket office is at First and Yesler.

Pioneer Square's First Thursdy Art Walk is the best way to enjoy over 20 galleries, and special events and openings abound.



A black and white photograph of the Seattle skyline at night, with numerous skyscrapers illuminated and their lights reflecting on the water in the foreground. The Space Needle is visible on the left side of the skyline.

seattle... oasis

VACATION RENTALS

THANK YOU!

We hope you've found this guide a helpful introduction to our beautiful home. We also have a video that will help introduce you to Seattle. As you plan your vacation to this fantastic city, please don't hesitate to reach out to us for tips regarding your specific trip.